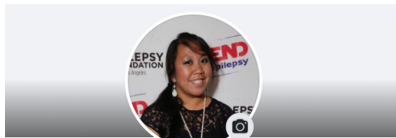


# Add Facebook Frame to Profile

## How-to Guide

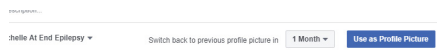
Head to your Facebook profile and select “Update Profile Picture” (look for the camera icon next to your profile)



**Jane Smith**  
Add Bio

Search for event name (i.e. Walk to END EPILEPSY, Epilepsy Foundation, etc.)

Adjust the frame size and drag to reposition to your liking



Click “Use as Profile Picture”

STEP 1

STEP 2

STEP 3

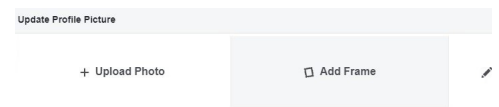
STEP 4

STEP 5

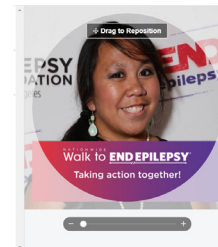
STEP 6

STEP 7

Click on “Add Frame”



Select the frame



Select how long you want the frame to appear on your page