

VALUE IMPACT of HEALTH CENTERS

Care for the Homeless

Federally Qualified Health Centers and other safety-net clinics such as **Care for the Homeless** provide tremendous value and impacts to their communities—from JOBS and ECONOMIC STIMULUS to local communities; SAVINGS to the health care system; ACCESS to care for vulnerable populations.

Highlights of **2016 contributions** are shown below.

JOBS and other positive impacts on the ECONOMY



93
TOTAL JOBS



\$2,032,913
TOTAL ECONOMIC IMPACT
of current operations.

\$308,961
ANNUAL TAX REVENUES



89 HEALTH CENTER JOBS

4 OTHER JOBS IN THE COMMUNITY

\$1,217,176
DIRECT HEALTH CENTER SPENDING

\$815,737
COMMUNITY SPENDING

\$94,753
STATE AND LOCAL TAX

\$214,208
FEDERAL TAX REVENUES

SAVINGS to the health system



24%
LOWER COSTS FOR HEALTH
CENTER MEDICAID
PATIENTS



\$11 Million
SAVINGS TO
MEDICAID

ACCESS to care for vulnerable populations



7,736
PATIENTS
SERVED

30,998
PATIENT
VISITS

693
patients are
CHILDREN AND
ADOLESCENTS

7,043
patients are
ADULTS

100% of patients are
LOW-INCOME
(Below 200% of the
Federal Poverty Level)

48% of patients
identify as an
**ETHNIC OR
RACIAL MINORITY**

Capital Link prepared this Value + Impact report using 2016 health center audited financial statements and Uniform Data System information. Economic impact was measured using 2015 IMPLAN Online.

 **CAPITAL LINK**
Driving Successful Health
Center Growth

For more information, visit us online:
www.caplink.org

© 2017 Capital Link. All Rights Reserved.

VALUE IMPACT of HEALTH CENTERS

Care for the Homeless

HOW ECONOMIC IMPACT IS MEASURED

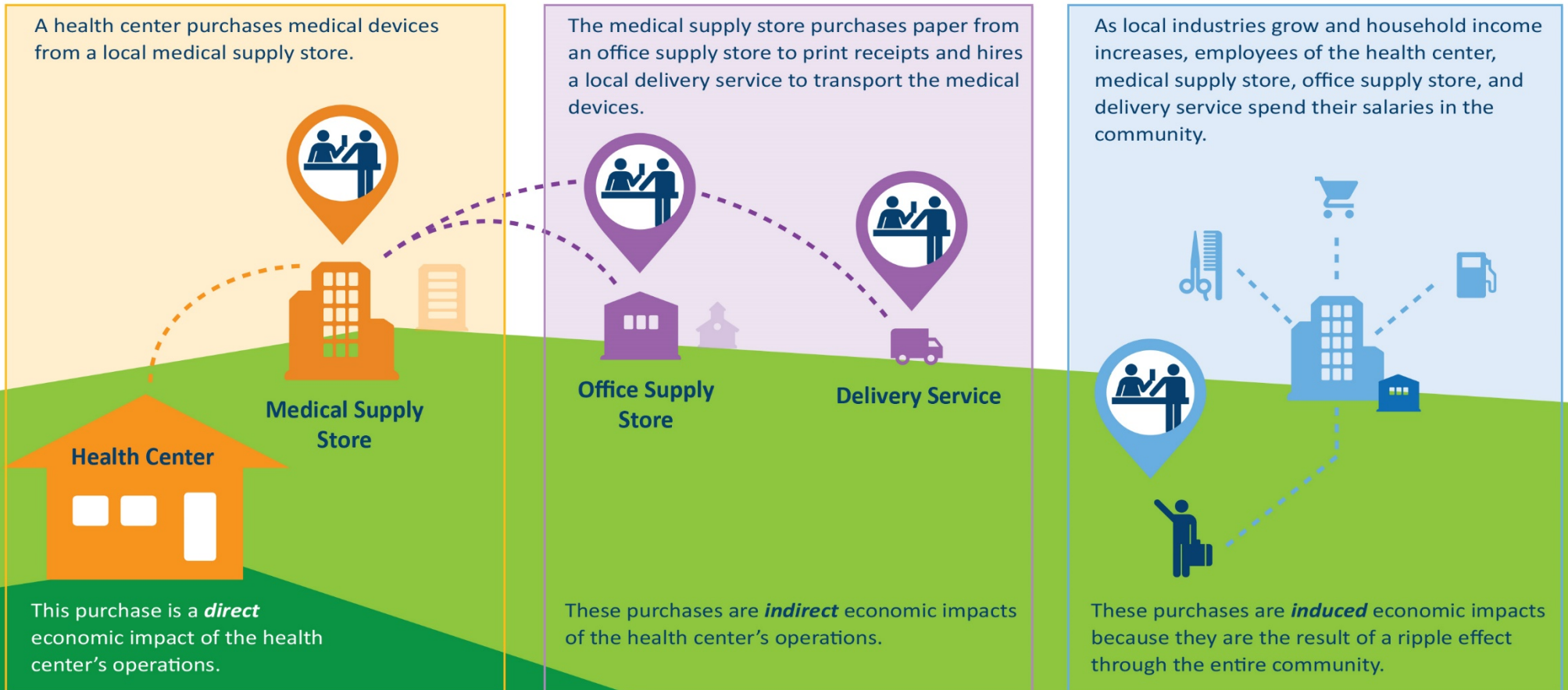
Using IMPLAN, integrated economic modeling software, this analysis applies the “multiplier effect” to capture the direct, indirect, and induced economic effects of health center business operations and capital project plans. IMPLAN generates multipliers by geographic region and by industry combined with a county/state database. It is widely used by economists, state and city planners, universities and others to estimate the impact of projects and expenditures on the local economy. This analysis was conducted using 2015 IMPLAN Online.

WHAT ARE DIRECT AND COMMUNITY IMPACTS?

Direct impacts result from *health center expenditures associated with operations, new facilities, and hiring.*

Community impacts can be indirect, resulting from *purchases of local goods and services, and jobs in other industries.*

Community impacts can be induced, resulting from *purchases of local goods and services at a household level made by employees of the health center and suppliers.*



VALUE IMPACT of HEALTH CENTERS

Care for the Homeless

REFERENCES AND DATA SOURCES

1. Economic and Employment Impacts: Calculated by Capital Link using 2015 IMPLAN Online.
2. Savings to Medi-Cal: Nocon et al. *Health Care Use and Spending for Medicaid Enrollees in Federally Qualified Health Centers Versus Other Primary Care Settings*. American Journal of Public Health: November 2016, Vol. 106, No. 11, pp. 1981-1989.
3. Access to Care for Vulnerable Populations: Bureau of Primary Health Care, HRSA, DHHS, 2016 Uniform Data System.

ACKNOWLEDGEMENTS

This report was funded by **(Community Health Centers of New York State)** for use by its member health centers.

This report was developed by Capital Link, a non-profit organization that has worked with hundreds of health centers and Primary Care Associations for over 18 years to plan capital projects, finance growth, and identify ways to improve performance. We provide innovative consulting services and extensive technical assistance with the goal of supporting and expanding community-based health care. For more information, visit us online at www.caplink.org.

Summary of 2016 Total Economic Activity

Stimulated by Current Operations of

		Economic Impact	Employment (# of FTEs*)
Community Impact	Direct	\$ 1,217,176	89
	Indirect	\$ 416,283	2
	Induced	\$ 399,454	2
	Total	\$ 2,032,913	93

Direct # of FTEs (employment) based on HRSA 2016 UDS state level data for FQHCs.

Summary of 2016 Tax Revenue

		Federal	State
Community Impact	Direct	\$137,380	\$41,845
	Indirect	\$41,069	\$24,576
	Induced	\$35,759	\$28,332
	Total	\$214,208	\$94,753
Total Tax Impact		\$308,961	

*Full-Time Equivalent (FTE) of 1.0 means that the person is equivalent to a full-time worker. In an organization that has a 40-hour work week, a person who works 20 hours per week (i.e. 50 percent time) is reported as "0.5 FTE." FTE is also based on the number of months the employee works. An employee who works full time for four months out of the year would be reported as "0.33 FTE" (4 months/12 months).